


Major Scales


Three Octaves

Violin


C Major



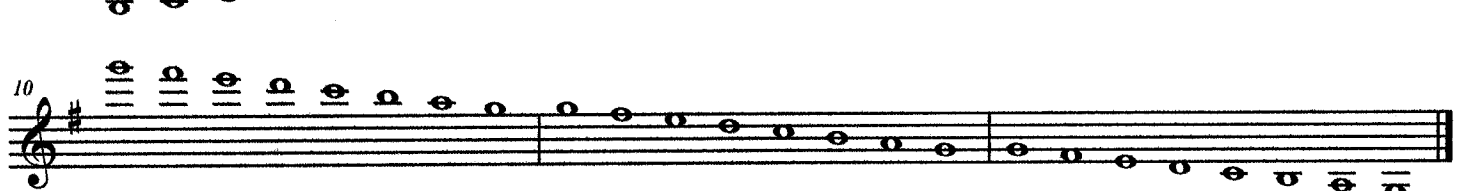
4



G Major

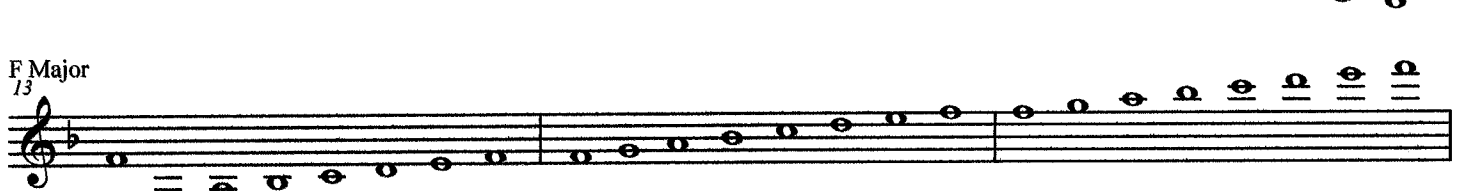


7

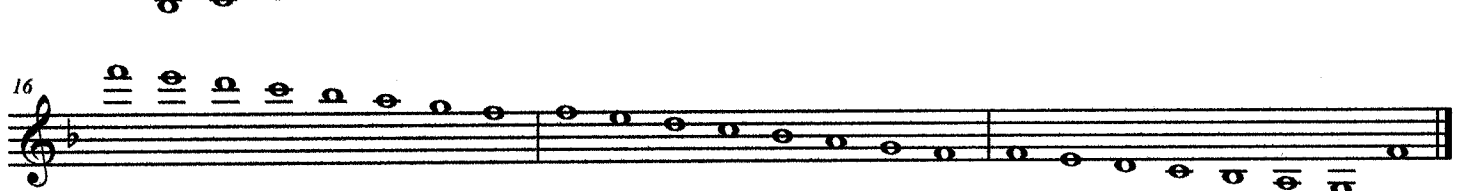


10

F Major




13

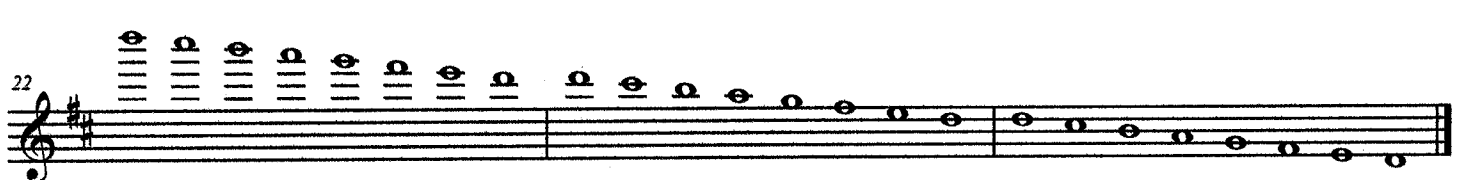


16

D Major



19



22

Detailed description: This page contains the musical notation for three octaves of four major scales: C Major, G Major, F Major, and D Major. Each scale is presented in two systems of three staves. The first system shows the ascending scale, and the second system shows the descending scale. Fingerings are indicated by numbers 1-4. The C Major scale starts on middle C (C4) and spans three octaves. The G Major scale starts on G4 and spans three octaves. The F Major scale starts on F4 and spans three octaves. The D Major scale starts on D4 and spans three octaves. The notation includes treble clefs, key signatures, and measure numbers (4, 7, 10, 13, 16, 19, 22) at the beginning of each system.

Bb Major

25

28

A Major

31

34

Eb Major

37

40

E Major

43

46

Ab Major

49

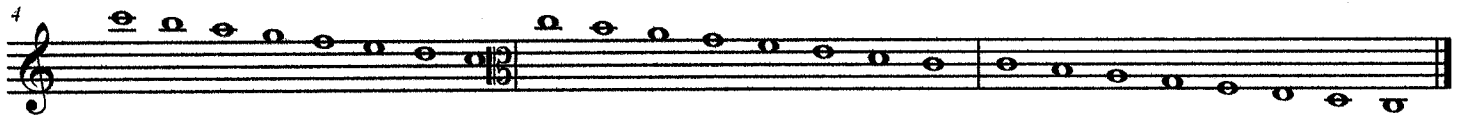
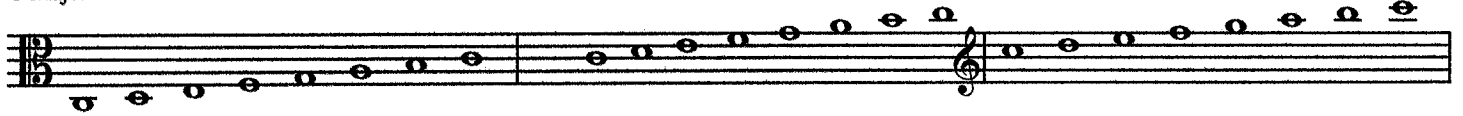
52

Major Scales

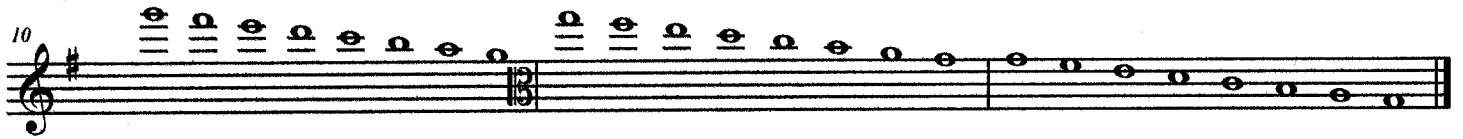
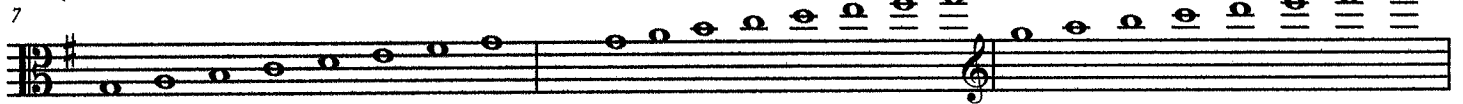
Three Octaves

Viola

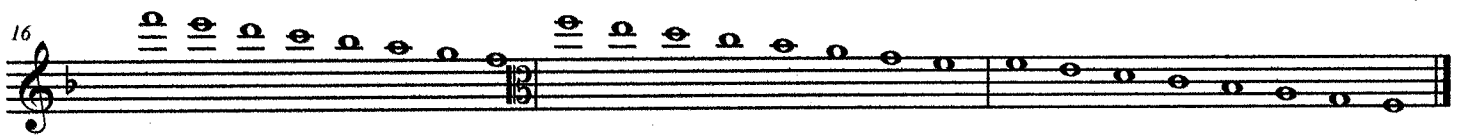
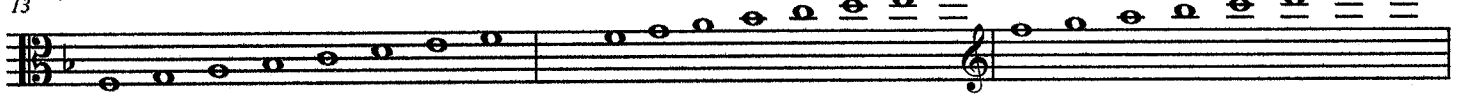
C Major



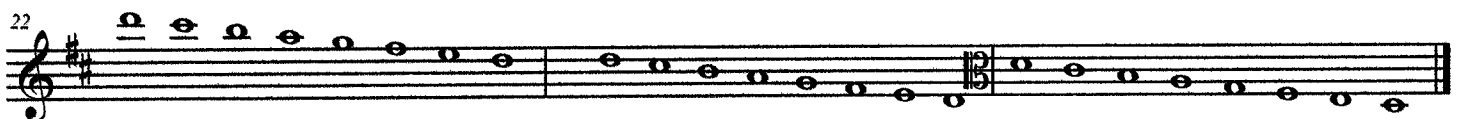
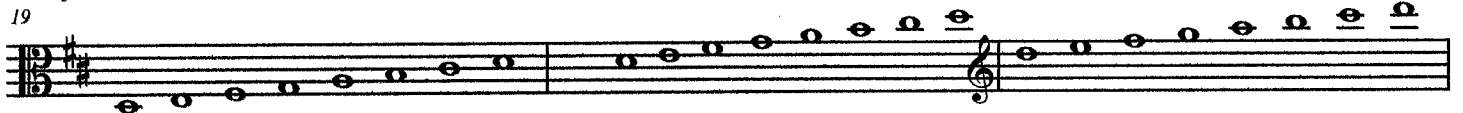
G Major



F Major



D Major



Bb Major

25

Two staves of music for the Bb Major scale. The first staff shows the bass clef with a key signature of two flats (Bb and Eb). The second staff shows the treble clef with the same key signature. The scale is written in quarter notes, ascending and then descending.

28

Two staves of music for the Bb Major scale. The first staff shows the treble clef with a key signature of two flats. The second staff shows the bass clef with the same key signature. The scale is written in quarter notes, ascending and then descending.

A Major

31

Two staves of music for the A Major scale. The first staff shows the bass clef with a key signature of three sharps (F#, C#, G#). The second staff shows the treble clef with the same key signature. The scale is written in quarter notes, ascending and then descending.

34

Two staves of music for the A Major scale. The first staff shows the treble clef with a key signature of three sharps. The second staff shows the bass clef with the same key signature. The scale is written in quarter notes, ascending and then descending.

Eb Major

37

Two staves of music for the Eb Major scale. The first staff shows the bass clef with a key signature of three flats (Bb, Eb, Ab). The second staff shows the treble clef with the same key signature. The scale is written in quarter notes, ascending and then descending.

40

Two staves of music for the Eb Major scale. The first staff shows the treble clef with a key signature of three flats. The second staff shows the bass clef with the same key signature. The scale is written in quarter notes, ascending and then descending.

E Major

43

Two staves of music for the E Major scale. The first staff shows the bass clef with a key signature of four sharps (F#, C#, G#, D#). The second staff shows the treble clef with the same key signature. The scale is written in quarter notes, ascending and then descending.

46

Two staves of music for the E Major scale. The first staff shows the treble clef with a key signature of four sharps. The second staff shows the bass clef with the same key signature. The scale is written in quarter notes, ascending and then descending.

Ab Major

49

Two staves of music for the Ab Major scale. The first staff shows the bass clef with a key signature of four flats (Bb, Eb, Ab, Db). The second staff shows the treble clef with the same key signature. The scale is written in quarter notes, ascending and then descending.

52

Two staves of music for the Ab Major scale. The first staff shows the treble clef with a key signature of four flats. The second staff shows the bass clef with the same key signature. The scale is written in quarter notes, ascending and then descending.

Major Scales

Three Octaves

Cello

C Major

Measures 1-4 of the C Major scale. Measure 1 starts on C2 (two ledger lines below the staff). Measure 2 ends on C3 (one ledger line below the staff). Measure 3 ends on C4 (middle C, one line below the staff). Measure 4 ends on C5 (one line below the staff).

G Major

Measures 5-10 of the G Major scale. Measure 5 starts on G2 (two ledger lines below the staff). Measure 6 ends on G3 (one ledger line below the staff). Measure 7 ends on G4 (middle G, one line below the staff). Measure 8 ends on G5 (one line below the staff). Measure 9 ends on G6 (one line below the staff). Measure 10 ends on G7 (one line below the staff).

F Major

Measures 11-16 of the F Major scale. Measure 11 starts on F2 (two ledger lines below the staff). Measure 12 ends on F3 (one ledger line below the staff). Measure 13 ends on F4 (middle F, one line below the staff). Measure 14 ends on F5 (one line below the staff). Measure 15 ends on F6 (one line below the staff). Measure 16 ends on F7 (one line below the staff).

D Major

Measures 17-22 of the D Major scale. Measure 17 starts on D2 (two ledger lines below the staff). Measure 18 ends on D3 (one ledger line below the staff). Measure 19 ends on D4 (middle D, one line below the staff). Measure 20 ends on D5 (one line below the staff). Measure 21 ends on D6 (one line below the staff). Measure 22 ends on D7 (one line below the staff).

Bb Major

25

Two staves of music for the Bb Major scale. The first staff shows measures 25 and 26, and the second staff shows measure 27. The scale is written in bass clef with a key signature of two flats (Bb and Eb). The notes are: 25: Bb2, Bb3, Bb4, Bb5, Bb6, Bb7; 26: Bb8, Bb9, Bb10, Bb11, Bb12, Bb13; 27: Bb14, Bb15, Bb16, Bb17, Bb18, Bb19.

28

Two staves of music for the Bb Major scale. The first staff shows measures 28 and 29, and the second staff shows measure 30. The scale is written in bass clef with a key signature of two flats. The notes are: 28: Bb20, Bb21, Bb22, Bb23, Bb24, Bb25; 29: Bb26, Bb27, Bb28, Bb29, Bb30, Bb31; 30: Bb32, Bb33, Bb34, Bb35, Bb36, Bb37.

A Major

31

Two staves of music for the A Major scale. The first staff shows measures 31 and 32, and the second staff shows measure 33. The scale is written in bass clef with a key signature of three sharps (F#, C#, G#). The notes are: 31: A2, A3, A4, A5, A6, A7; 32: A8, A9, A10, A11, A12, A13; 33: A14, A15, A16, A17, A18, A19.

34

Two staves of music for the A Major scale. The first staff shows measures 34 and 35, and the second staff shows measure 36. The scale is written in bass clef with a key signature of three sharps. The notes are: 34: A20, A21, A22, A23, A24, A25; 35: A26, A27, A28, A29, A30, A31; 36: A32, A33, A34, A35, A36, A37.

Eb Major

37

Two staves of music for the Eb Major scale. The first staff shows measures 37 and 38, and the second staff shows measure 39. The scale is written in bass clef with a key signature of three flats (Bb, Eb, Ab). The notes are: 37: Eb2, Eb3, Eb4, Eb5, Eb6, Eb7; 38: Eb8, Eb9, Eb10, Eb11, Eb12, Eb13; 39: Eb14, Eb15, Eb16, Eb17, Eb18, Eb19.

40

Two staves of music for the Eb Major scale. The first staff shows measures 40 and 41, and the second staff shows measure 42. The scale is written in bass clef with a key signature of three flats. The notes are: 40: Eb20, Eb21, Eb22, Eb23, Eb24, Eb25; 41: Eb26, Eb27, Eb28, Eb29, Eb30, Eb31; 42: Eb32, Eb33, Eb34, Eb35, Eb36, Eb37.

E Major

43

Two staves of music for the E Major scale. The first staff shows measures 43 and 44, and the second staff shows measure 45. The scale is written in bass clef with a key signature of four sharps (F#, C#, G#, D#). The notes are: 43: E2, E3, E4, E5, E6, E7; 44: E8, E9, E10, E11, E12, E13; 45: E14, E15, E16, E17, E18, E19.

46

Two staves of music for the E Major scale. The first staff shows measures 46 and 47, and the second staff shows measure 48. The scale is written in bass clef with a key signature of four sharps. The notes are: 46: E20, E21, E22, E23, E24, E25; 47: E26, E27, E28, E29, E30, E31; 48: E32, E33, E34, E35, E36, E37.

Ab Major

49

Two staves of music for the Ab Major scale. The first staff shows measures 49 and 50, and the second staff shows measure 51. The scale is written in bass clef with a key signature of four flats (Bb, Eb, Ab, Db). The notes are: 49: Ab2, Ab3, Ab4, Ab5, Ab6, Ab7; 50: Ab8, Ab9, Ab10, Ab11, Ab12, Ab13; 51: Ab14, Ab15, Ab16, Ab17, Ab18, Ab19.

52

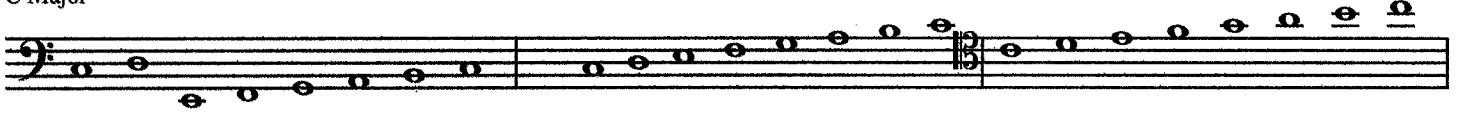
Two staves of music for the Ab Major scale. The first staff shows measures 52 and 53, and the second staff shows measure 54. The scale is written in bass clef with a key signature of four flats. The notes are: 52: Ab20, Ab21, Ab22, Ab23, Ab24, Ab25; 53: Ab26, Ab27, Ab28, Ab29, Ab30, Ab31; 54: Ab32, Ab33, Ab34, Ab35, Ab36, Ab37.

Major Scales

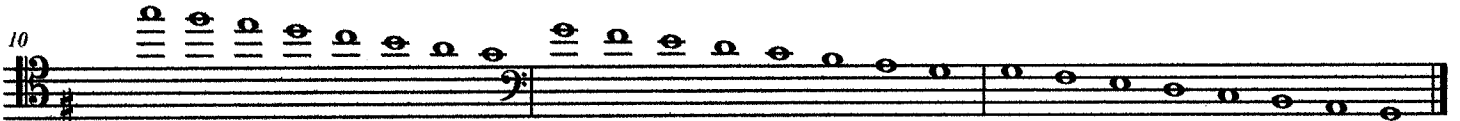
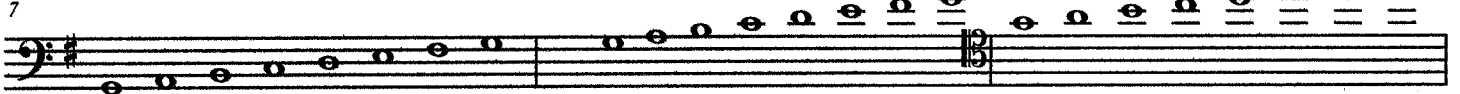
Three Octaves

Bass

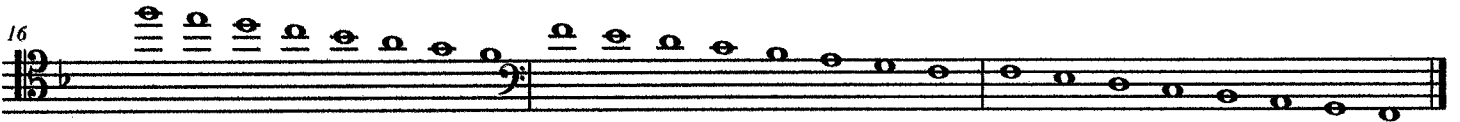
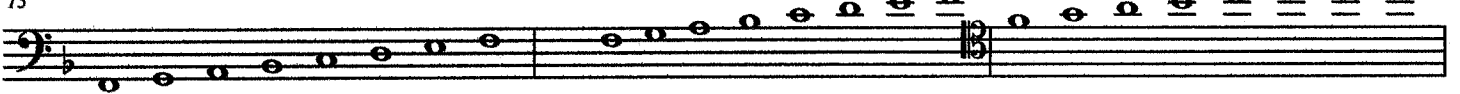
C Major



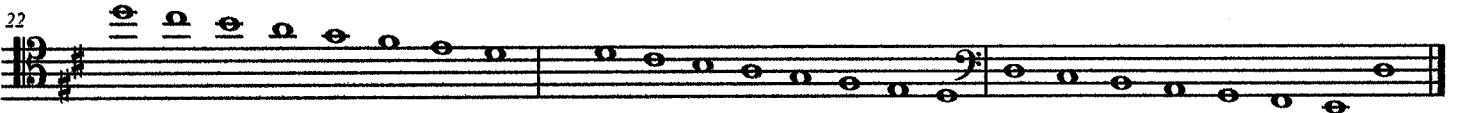
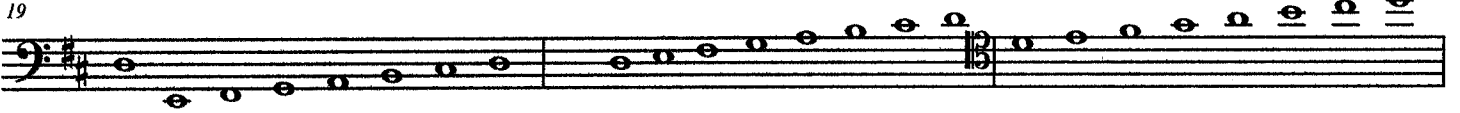
G Major



F Major



D Major



Bb Major
25

Two staves of music for the Bb Major scale. The first staff shows measures 25 and 26, and the second staff shows measure 27. The scale is written in bass clef with a key signature of two flats (Bb and Eb). The notes are: 25: Bb, C, D, Eb, E, F, G, Ab; 26: Bb, C, D, Eb, E, F, G, Ab; 27: Bb, C, D, Eb, E, F, G, Ab.

Two staves of music for the Bb Major scale. The first staff shows measures 28 and 29, and the second staff shows measure 30. The scale is written in bass clef with a key signature of two flats (Bb and Eb). The notes are: 28: Bb, C, D, Eb, E, F, G, Ab; 29: Bb, C, D, Eb, E, F, G, Ab; 30: Bb, C, D, Eb, E, F, G, Ab.

Two staves of music for the A Major scale. The first staff shows measures 31 and 32, and the second staff shows measure 33. The scale is written in bass clef with a key signature of three sharps (F#, C#, G#). The notes are: 31: A, B, C, D, E, F#, G#, A; 32: A, B, C, D, E, F#, G#, A; 33: A, B, C, D, E, F#, G#, A.

Two staves of music for the A Major scale. The first staff shows measures 34 and 35, and the second staff shows measure 36. The scale is written in bass clef with a key signature of three sharps (F#, C#, G#). The notes are: 34: A, B, C, D, E, F#, G#, A; 35: A, B, C, D, E, F#, G#, A; 36: A, B, C, D, E, F#, G#, A.

Two staves of music for the Eb Major scale. The first staff shows measures 37 and 38, and the second staff shows measure 39. The scale is written in bass clef with a key signature of three flats (Bb, Eb, Ab). The notes are: 37: Eb, F, G, Ab, Bb, C, D, Eb; 38: Eb, F, G, Ab, Bb, C, D, Eb; 39: Eb, F, G, Ab, Bb, C, D, Eb.

Two staves of music for the Eb Major scale. The first staff shows measures 40 and 41, and the second staff shows measure 42. The scale is written in bass clef with a key signature of three flats (Bb, Eb, Ab). The notes are: 40: Eb, F, G, Ab, Bb, C, D, Eb; 41: Eb, F, G, Ab, Bb, C, D, Eb; 42: Eb, F, G, Ab, Bb, C, D, Eb.

Two staves of music for the E Major scale. The first staff shows measures 43 and 44, and the second staff shows measure 45. The scale is written in bass clef with a key signature of four sharps (F#, C#, G#, D#). The notes are: 43: E, F#, G#, A, B, C#, D#, E; 44: E, F#, G#, A, B, C#, D#, E; 45: E, F#, G#, A, B, C#, D#, E.

Two staves of music for the E Major scale. The first staff shows measures 46 and 47, and the second staff shows measure 48. The scale is written in bass clef with a key signature of four sharps (F#, C#, G#, D#). The notes are: 46: E, F#, G#, A, B, C#, D#, E; 47: E, F#, G#, A, B, C#, D#, E; 48: E, F#, G#, A, B, C#, D#, E.

Two staves of music for the Ab Major scale. The first staff shows measures 49 and 50, and the second staff shows measure 51. The scale is written in bass clef with a key signature of four flats (Bb, Eb, Ab, Db). The notes are: 49: Ab, Bb, C, D, Eb, F, G, Ab; 50: Ab, Bb, C, D, Eb, F, G, Ab; 51: Ab, Bb, C, D, Eb, F, G, Ab.

Two staves of music for the Ab Major scale. The first staff shows measures 52 and 53, and the second staff shows measure 54. The scale is written in bass clef with a key signature of four flats (Bb, Eb, Ab, Db). The notes are: 52: Ab, Bb, C, D, Eb, F, G, Ab; 53: Ab, Bb, C, D, Eb, F, G, Ab; 54: Ab, Bb, C, D, Eb, F, G, Ab.