

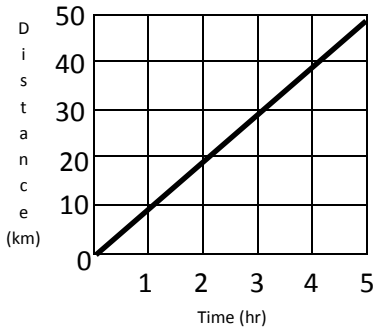
MORE SPEED & GRAPHING PRACTICE

Which type of speed does each graph show (**constant** or **changing**)?

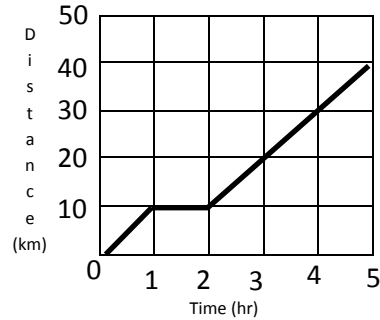
1) Graph A: _____

2) Graph B: _____

GRAPH - A



GRAPH - B



3) Calculate the speed for **graph A**:

4) Calculate the speed for **graph B** at 1 hr:

5) What happens in **graph B** between 1 and 2 hr?

6) Calculate the average speed for **graph B**:

The table below reflects Jack's ride on his skateboard. Use the table for the following questions.

Time (sec)	Distance (m)
0	0
5	30
10	70
15	90
20	120

7) What was Jack's speed from T = 0 sec to T = 5 sec?

8) What was his speed from T = 5 to T = 10 sec?

9) What was Jack's average speed for the ride?

10) Was Jack's speed constant or changing? (hint: pick 2 or more distances and times and calculate his speed)